



Celebrant RIP Service Pack V6.1.3.15

Distributor Release Notes

Extended T-Series Engine Support

- 1. New Supported N-Series Devices**
- 2. Device Functionality**
- 3. Installation**
- 4. PIF Drivers**
- 5. Adding Platesetters in Device Utilities.**

1. New Supported N-Series Devices

This Celebrant Service Pack should only be installed when connecting to the N-Series PlateSetter and Thermal T engines. This patch adds additional support for a number of N-Series platesetter devices (see below). No other new functionality has been added and there are no other changes.

| Fujifilm Product Name | DaiNippon Screen Product Name | Installed in Celebrant as |
|-----------------------|-------------------------------|---------------------------|
| T-9300CTP N | PlateRite8300N-E | T-9000E |
| T-9300CTP NS | PlateRite8300N-S | T-9000CTP |
| T-9500CTP N | PlateRite8600N-E | T-9000CTP |
| T-9500CTP NS | PlateRite8600N-S | T-9000CTP |
| T-9500CTP NHS | PlateRite8600N-Z | T-9000CTP |
| T-9800CTP NE | PlateRite8800N-E | T-9800 |
| T-9800CTP NS | PlateRite8600N-S | T-9800 |
| T-9800CTP NHS | PlateRite8800N-Z | T-9800 |
| T-9800CTP NHX | PlateRite8800N-ZX | T-9800 |

2. Device Functionality

| Model | T-9300CTP N | T-9300CTP NS | |
|-----------------------------------|-----------------------------|--------------------------|--------------------------------------|
| Celebrant Device License Group | T-9000E | T-9000CTP | |
| Productivity (1030x800mm@2400dpi) | 8pph | 14pph | 14pph |
| Resolution | 2400, 2438, 2540 | 1200, 2400 2438, 2540 | 1200, 2000, 2400 2438, 2540, 4000 |
| Plate size (Max/Min) | Max. 1160x940, Min. 304x370 | | |
| PIF type | F-PIF | | |

| Model | T-9500CTP N | T-9500CTP NS | T-9500CTP NHS |
|--------------------------------|-----------------------------|--------------------------|--------------------------------------|
| Celebrant Device License Group | T-9000CTP | | |
| Productivity | 14pph | 23pph | 23pph |
| Resolution | 1200, 2400 2438, 2540 | 1200, 2400 2438, 2540 | 1200, 2000, 2400 2438, 2540, 4000 |
| Plate size (Max/Min) | Max. 1160x940, Min. 304x370 | | |
| PIF type | F-PIF | | |

| Model | T-9800CTP NE | T-9800CTP NS | T-9800CTP NHS | T-9800CTP NHX |
|--------------------------------|----------------------------------------|--------------|---------------|--------------------------|
| Celebrant Device License Group | T-9800 | | | |
| Productivity | 26pph | 36pph | 42pph | 51pph |
| Resolution | 1200, 2400, 2438, 2540 4000(option) | | | 1200, 2400 2438, 2540 |
| Plate size (Max/Min) | Max. 1160x940, Min. 304x370 | | | |
| PIF type | S-PIF | | | |

3. Installation

System must already be loaded sequentially with R6.1, R6.1.3 prior to installing V6.1.3.15

- Refer to and follow the Celebrant R6.1 Distributor Release Notes for instructions on how to install R6.1 and V6.1.3 if required
- **New T-Series engine Service Pack (V6.1.3.15) Installer Bundle** can be installed

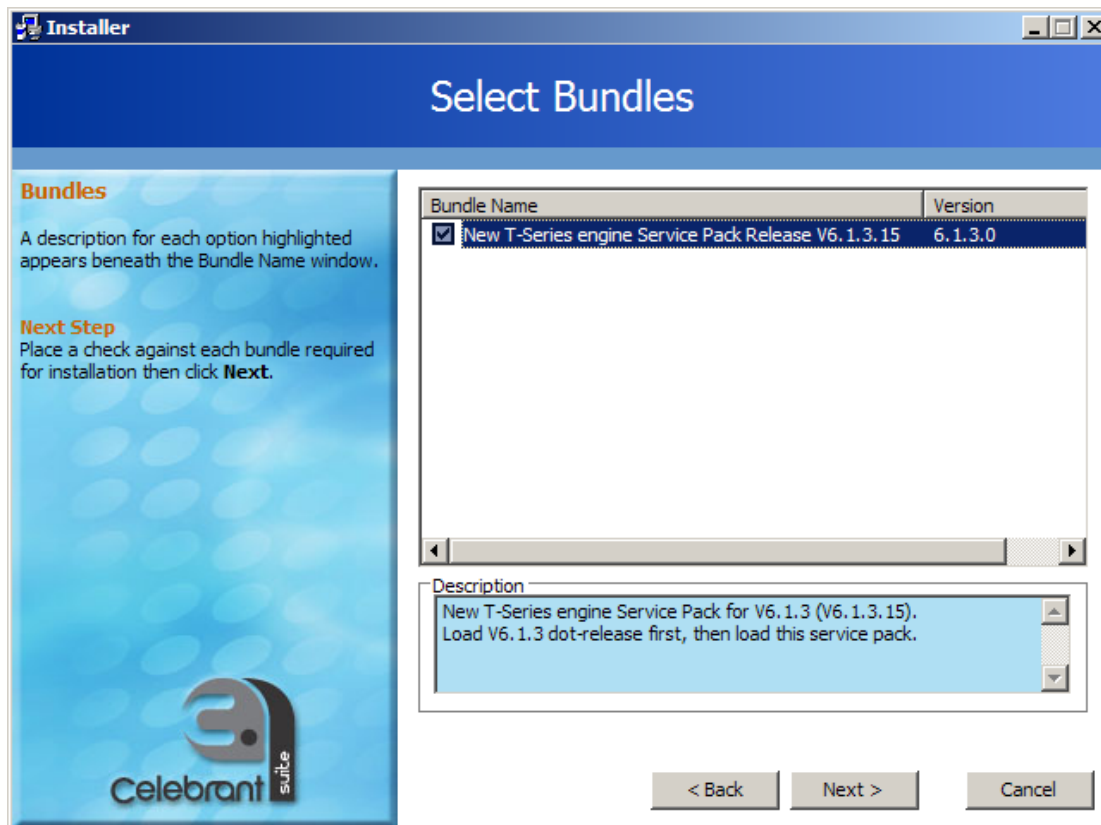


Figure 1 - Bundle Info

4. PIF Drivers

Outputting to the PT-R8800-N Series (Luxel T9800CTP) will only be possible after updating the PIF card driver to v3.7.0.2.

Drivers for Win2000, WindowsServer2000 driver /Driver/Win2003 and WindowsServer2003 driver
Open “Device Manager” to find the device named “PCIPIF/PP66 PIF Interface”;
Right-click the icon then select “Update Driver” (see image below)

***Drivers in /Driver/WinNT, /Driver/OldVersion cannot be used for P-PIF.**

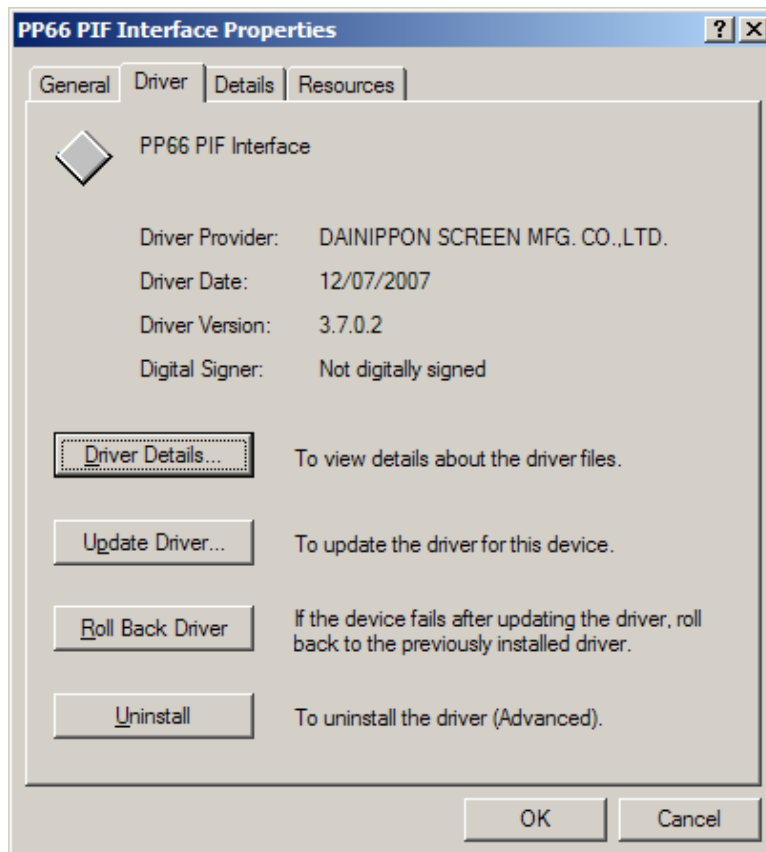


Figure 2 - PIF Interface Card Driver Version. Upgraded from v3.3.0.0

Status check

PIF card version and firmware version can be checked by executing /TestTool/PIF_Information.exe (See the image below).

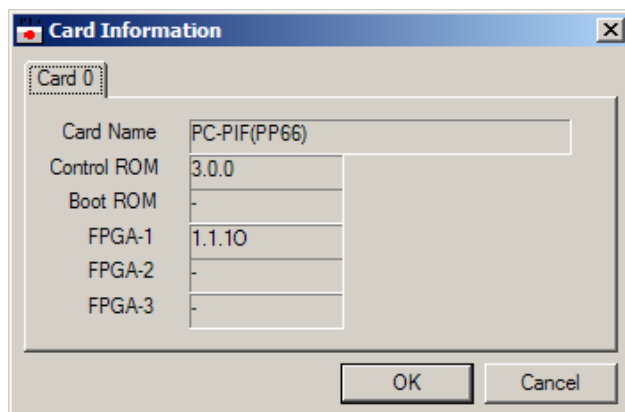


Figure 3 - PIF Interface Card Information

- If the incorrect driver is loaded on any of the new T9800CTP configurations Error message “S-PIF Mode is not supported with this PIF Card F/W version” indicates the incorrect driver is loaded.

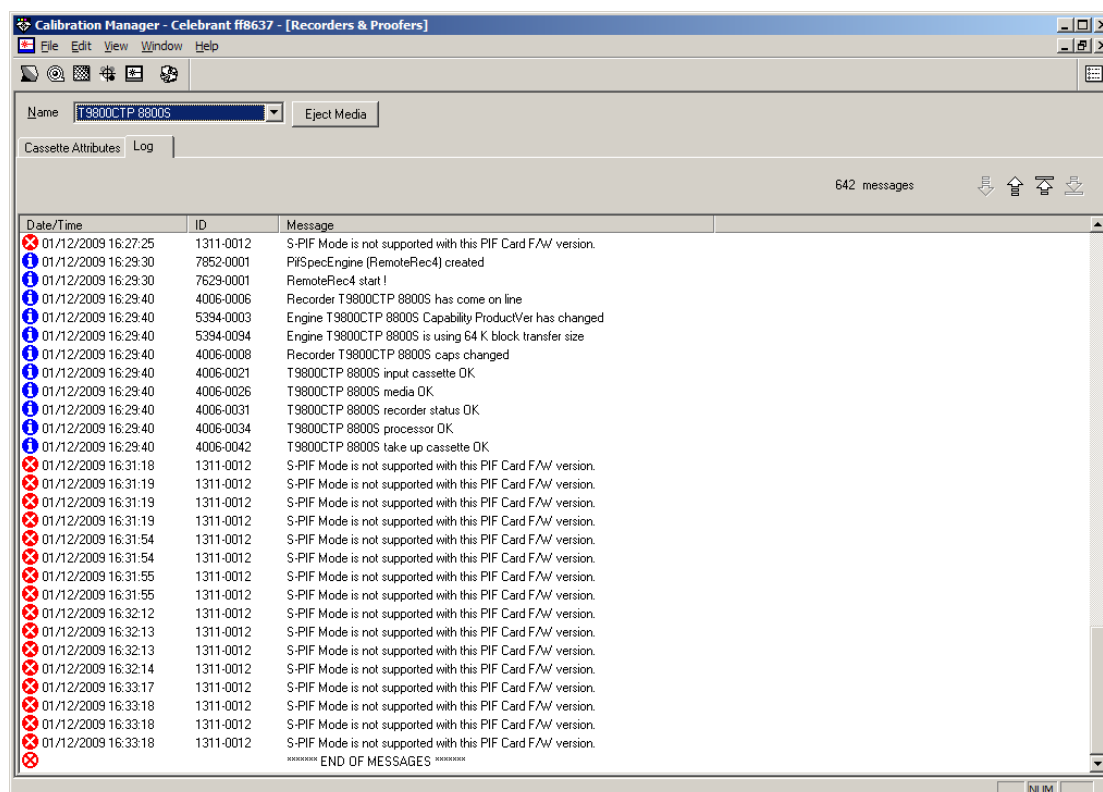


Figure 4 – When Using PIF v3.3.0.0 (v3.7.0.2) must be loaded

5. Adding Platesetters in Device Utilities.

Configure Luxel T-Series device as required on FFPif10 interface

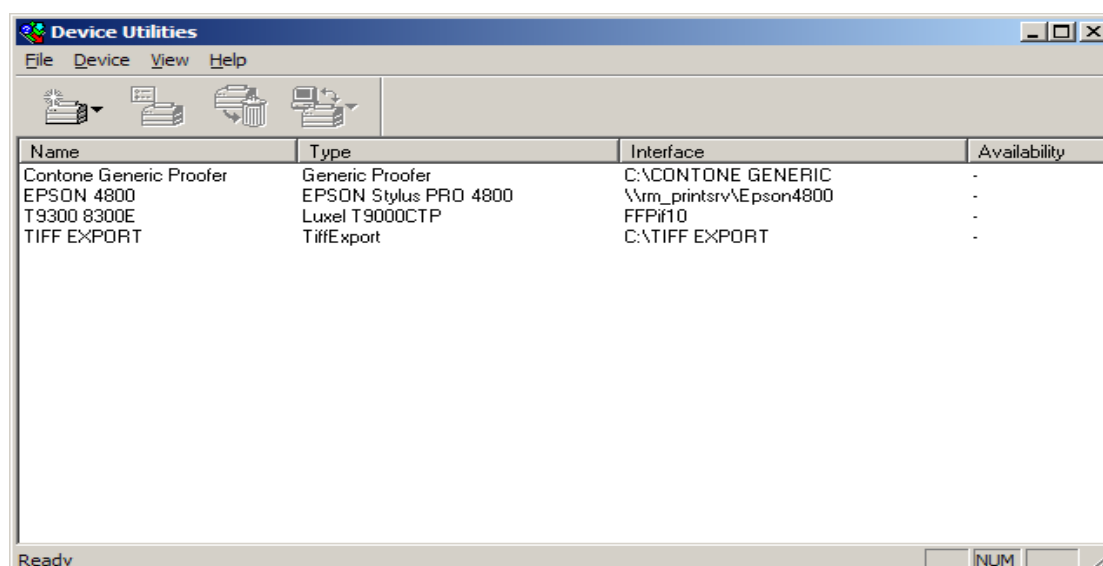


Figure 5 - T-Series added via Device Utilities